

# Gen 5 Camaro Installation Instructions

---

## Step 1:

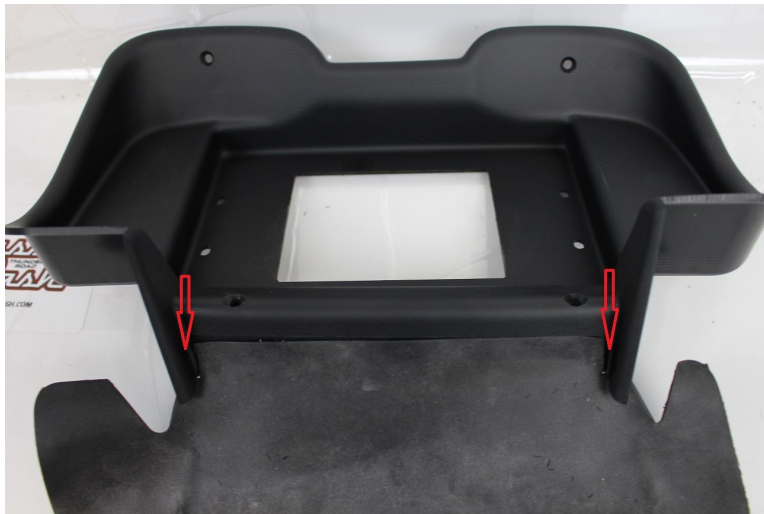
After removing the old dash, remove the rubber steering column cover and install onto the new Classic Dash bezel.



---

## Step 2:

Cut away excess rubber from the steering column cover so it fits as shown below with the red arrows..



**Step 3:**

Identify brackets and install as shown. The shorter of the L brackets will go on the right hand side when looking at the dash from the driver's seat perspective, and the longer bracket on the left. Install as show in the picture below and use the screws provided to mount.



---

**Step 4:**

The top v-brackets are located by the larger hole. The v-bracket that goes on the top left side will have the large hole on the left side of the bracket. Similarly, the top right bracket will have the larger hole on the right side of the bracket. Use the screws provided to mount to the dash as shown below.



