



# Elite Series Gauge Wiring Harness

## Classic Dash Part Number #5700 – Elite Series Gauge Wiring Harness

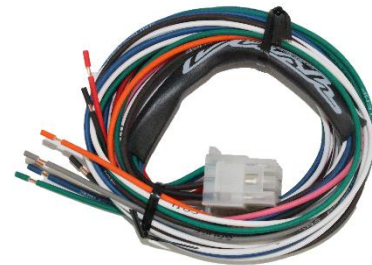
This harness is intended for the Classic Dash Elite Gauge Series ONLY.

### What's Included:

- 1) Gauge Side Harness
- 2) Vehicle Side Harness
- 3) 5203 Heat Shrink Tubing and Terminal Kit
- 4) TRIP / RESET Push Button
- 5) 500627 LED Kit

### Recommended Tools and Supplies:

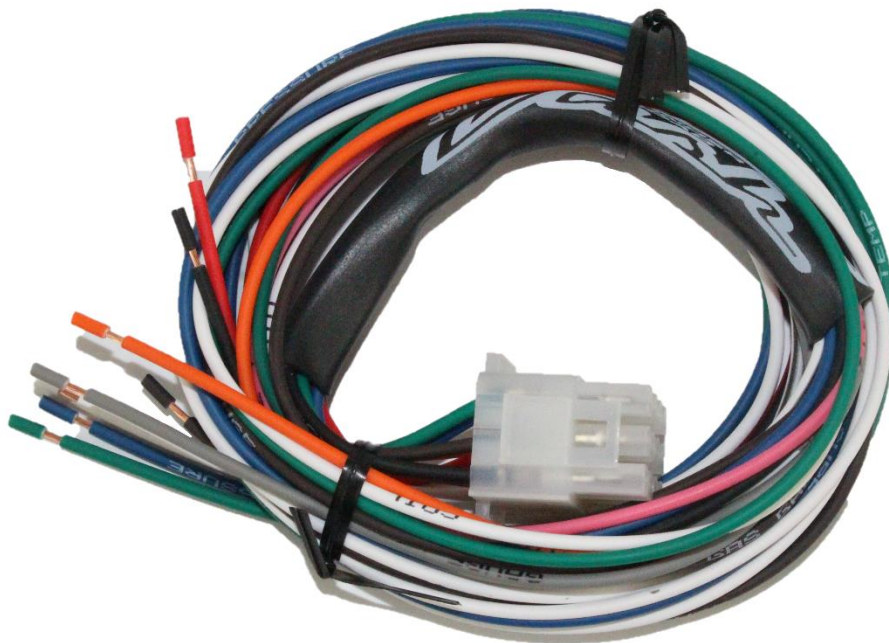
- Side cutter or “dykes” pliers
- Soldering iron with solder (or “red” butt connectors)
- Electrical/crimping pliers
- Multi-meter (voltage tester)
- Drill motor
- 5/32” drill bit
- Crazy glue
- Center punch / ice pick
- Tape measure
- Screwdrivers (Phillips & blade type)
- Razor blade / box cutter
- Hand files (fine and medium)
- Open end wrench or socket set (3/8” through 9/16”)
- Heating device for shrink wrap tubing



## Vehicle Side Harness

We recommend starting with your vehicle side of the harness because this harness will be permanently wired and installed in your vehicle. This harness consists of 10 wires, all of which will need to run to the factory wiring harness and engine compartment.

- 1) The **BLACK** wire will be hard wired into any GROUND.
- 2) The **GRAY** wire will be hard wired into the GAUGE LIGHTS wire.
- 3) The short **PINK** wire will be hard wired to a 12V IGNITION wire.
- 4) The **WHITE** wire will run to the negative side of the coil if you have a distributor with ignition box. If you DO have an ignition box, you will connect the white wire to the tachometer output signal wire on box.
- 5) The **BROWN** wire will be hard wired into the FUEL gauge wire.
- 6) The **ORANGE** wire will be hard wired into the stock LEFT TURN signal wire.
- 7) The **RED** wire will be hard wired into the stock HIGH BEAM wire.
- 8) The **BLACK / WHITE** striped wire will be hard wired into the stock RIGHT TURN signal wire.
- 9) The **GREEN** wire will run to the engine compartment (through the firewall) and be connected to the water temperature sending unit. Cut wire to length. Strip a ¼” off and slide on a heat shrink tube. Crimp a ring connector on end of wire. Slide tubing over connector and then shrink it.
- 10) The **BLUE** wire will run to the engine compartment (through the firewall) and be connected to the oil pressure sending unit. Cut wire to length. Strip a ¼” off and slide on a heat shrink tube. Crimp a ring connector on end of wire. Slide tubing over connector and then shrink it.



## Gauge Side Harness

After you've installed the vehicle side harness, it's time to install the gauge side harness. This harness consists of 19 wires and one speedometer connector to connect your speedometer, tachometer, fuel level, oil pressure, water temp and voltmeter gauges. The pigtail will plug directly into the vehicle side harness pigtail.

Speedometer Gauge – Connector with three wires (PINK, BLACK, GRAY)

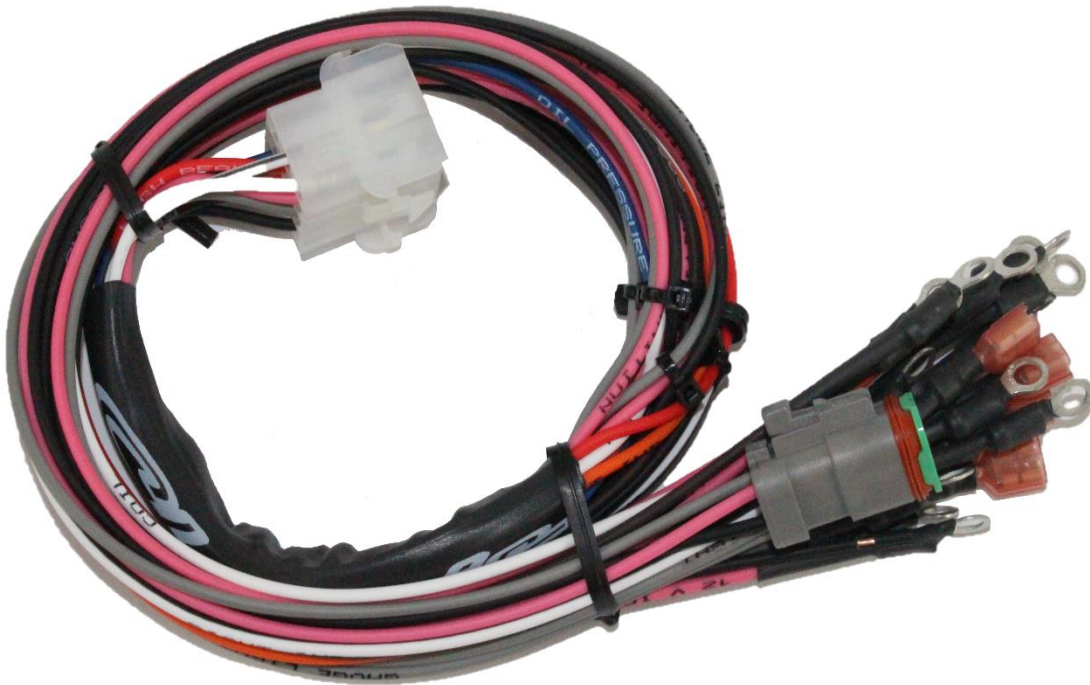
Tachometer Gauge – WHITE (SIGNAL), PINK (IGNITION), BLACK (GROUND), GRAY (GAUGE LIGHT)

Fuel Level Gauge – BROWN (SIGNAL), PINK (IGNITION), BLACK (GROUND), GRAY (GAUGE LIGHT)

Voltmeter Gauge – PINK (IGNITION), BLACK (GROUND), GRAY (GAUGE LIGHT)

Oil Pressure Gauge – BLUE (SIGNAL), PINK (IGNITION), BLACK (GROUND), GRAY (GAUGE LIGHT)

Water Temperature Gauge – GREEN (SIGNAL), PINK (IGNITION), BLACK (GROUND), GRAY (GAUGE LIGHT)



# Elite Series Gauge Wiring Harness

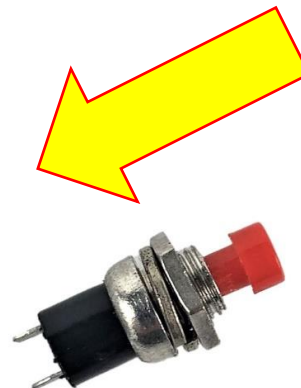
## Speedometer Directions



The speedometer will have a triangular plug that connects all of the necessary wires to the back of the gauge.



The GPS Plug-and-Play Antenna (included) plugs directly into the back of the speedometer. The black and white wires shown on the back of the speedometer are for TRIP / RESET. Install push button switch (included) between these two wires.



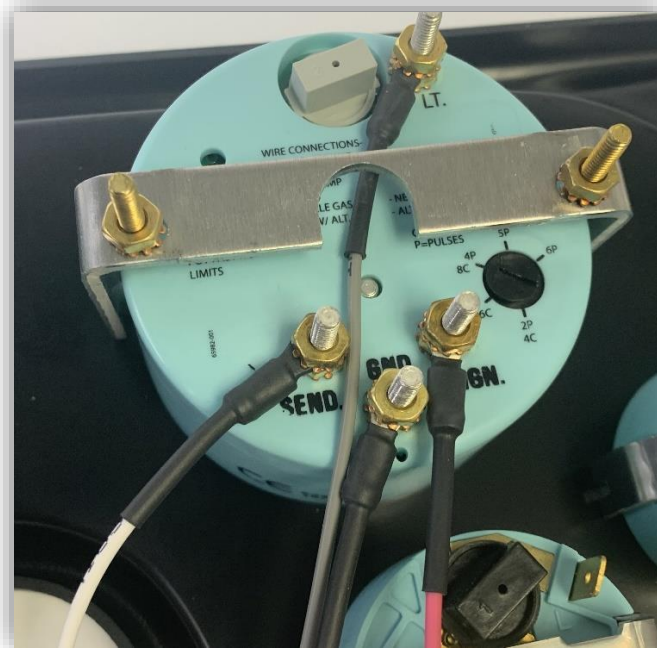


## Tachometer Directions



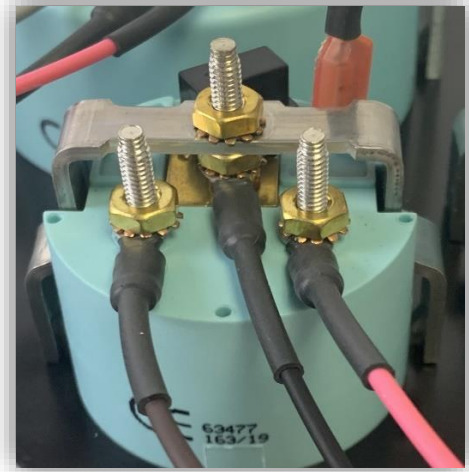
The tachometer will have 4 wires connecting to it:

- WHITE signal wire (SEND)
- PINK ignition wire (IGN)
- BLACK ground wire (GND)
- GRAY gauge light wire (LT)



The black knob on the right side on the back of the gauge **MUST** be set to the correct cylinder number of your engine in order for the tachometer to function properly.

## Fuel Level Gauge Directions



The fuel level gauge will have 4 wires connecting to it:

- **BROWN** signal wire (SEND)
- **PINK** ignition wire (IGN)
- **BLACK** ground wire (GND)
- **GRAY** gauge light wire (LT)

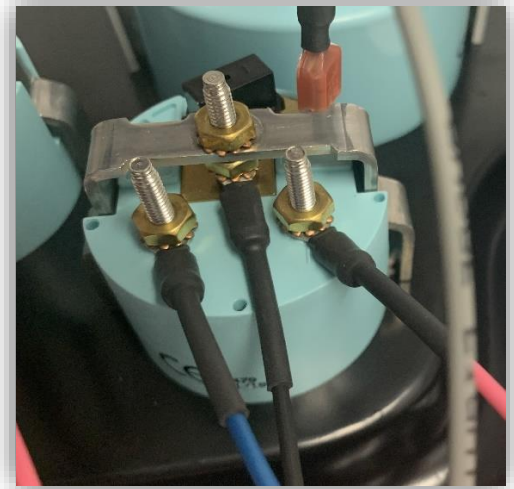
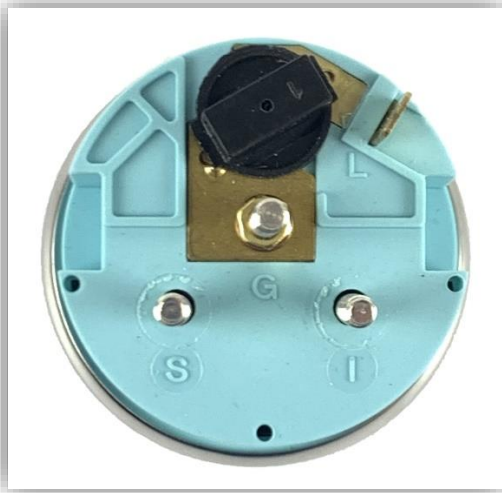
## Voltmeter Directions



The voltmeter gauge will have 3 wires connecting to it:

- **PINK** ignition wire (IGN)
- **BLACK** ground wire (GND)
- **GRAY** gauge light wire (LT)

## Oil Pressure Gauge Directions



The oil pressure gauge will have 4 wires connecting to it:

- **BLUE** signal wire (SEND)
- **PINK** ignition wire (IGN)
- **BLACK** ground wire (GND)
- **GRAY** gauge light wire (LT)

## Water Temperature Gauge Directions



The water temperature gauge will have 4 wires connecting to it:

- **GREEN** signal wire (SEND)
- **PINK** ignition wire (IGN)
- **BLACK** ground wire (GND)
- **GRAY** gauge light wire (LT)



# Elite Series Gauge Wiring Harness

---

Part Number: 500627 (Elite Series LED Light Kit)

LED Kit contains 2 Green LED lights and 1 Amber LED light.

Tools required for installation in a Classic Dash Panel: cordless or corded drill, a 5/32" drill bit, center punch or ice pick, wire crimping tools or a soldering iron, crazy glue (optional), and a measuring tool of your choice.

Step 1: Locate two locations for the 2 Green LED light signal indicators and proceed to mark the location with either the center punch or ice pick. Do this on the back of the dash panel.

Step 2: Select a location for the Amber LED light for the High Beam Indicator and mark this location with either the center punch or ice pick. Do this on the back of the dash panel.

Step 3: Carefully drill the 3 holes you just located with the cordless or corded drill and the 5/32" drill bit.

Step 4: Insert the 3 LED lights in the holes drilled in step 3. You will need to insert the LEDs from the front side of the dash panel. The LEDs are barrel shaped so when you are inserting them make sure you get them fully seated all the way down. If you would like you may add a drop of crazy glue to the back of the LED housing on the back side of the panel after you fully seat the LED itself.

Step 5: Select the Amber (High Beam) LED and attach it to the High Beam indicator wire in the wiring harness. Connect the black lead to either a provided ground in the harness or a common ground of your choice.

Step 6: Select the Left Green LED Light and attach the red lead from the LED to the orange signal lead in your wiring harness. Connect the black lead to either a provided ground in the harness or a common ground of your choice.

Step 7: Select the Right Green LED light and attach the red lead from the LED to the white and black striped signal lead in your wiring harness. Connect the black lead to either a provided ground in the harness or a common ground of your choice.