

You will need to drill a hole in the dash panel to mount your headlamp switch. We recommend drilling your hole in the specified area.





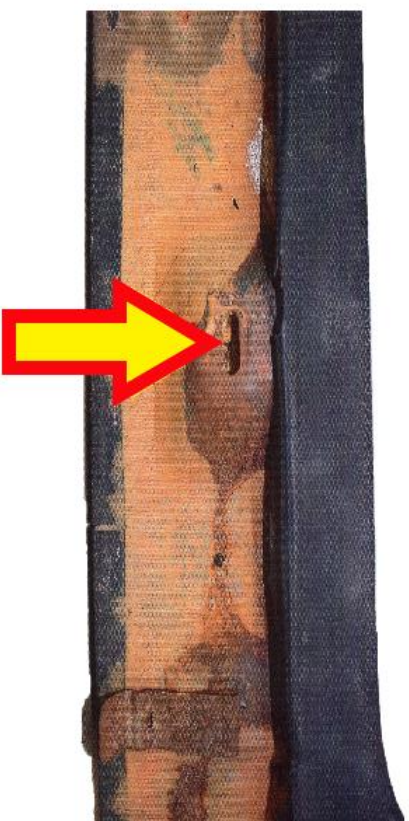
Rear Control Attachment Screws

Lower Dash Studs, nuts and washers

Rear Heavy Lab Attachment Bolts and nuts

Dash to Lab screws and clips

You will need to install the included clips into the dash pad as shown.



Lower Dash Studs, Nuts, and Washers

